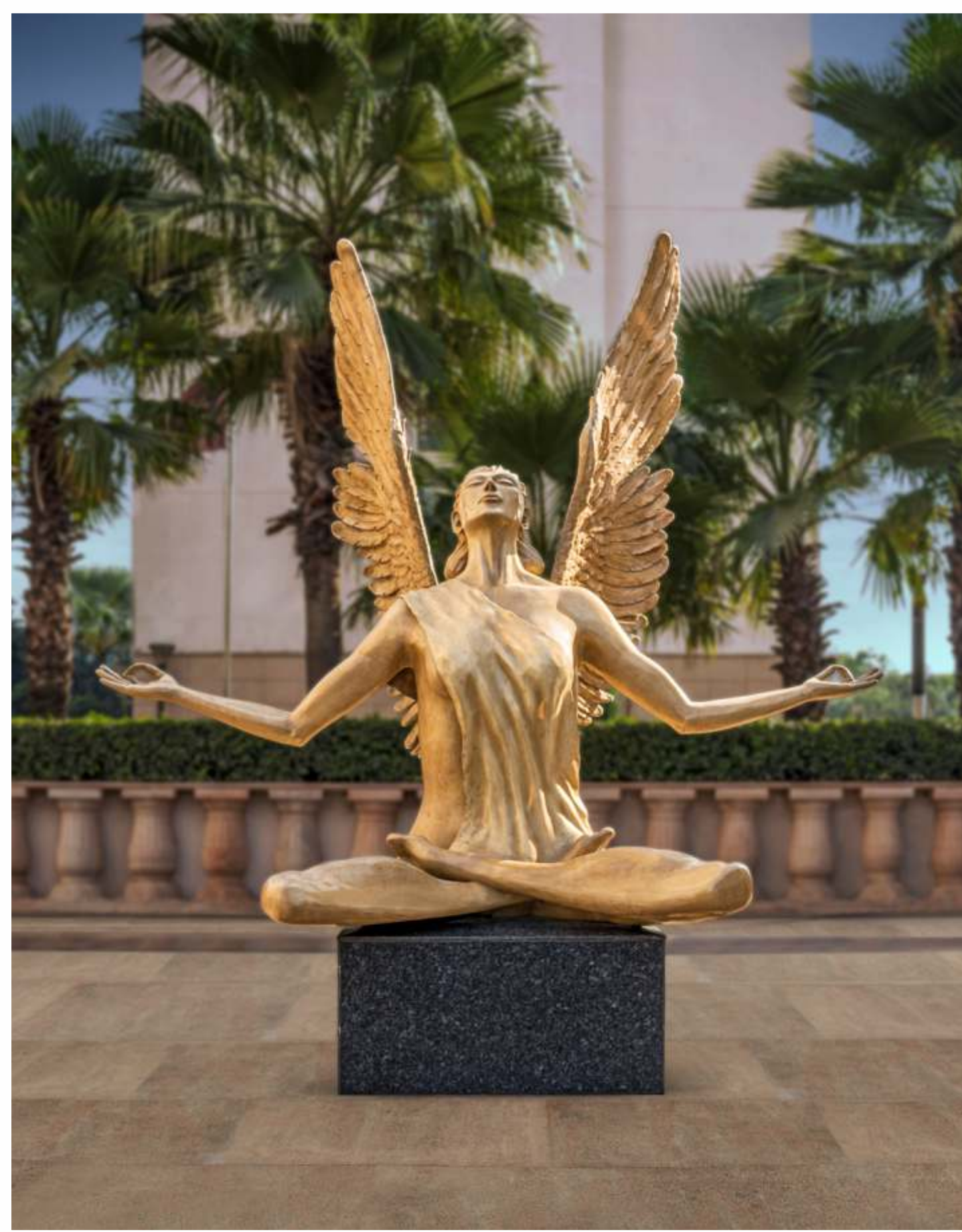




THE LEAF
At SS City

SECTOR -85, GURUGRAM



.....
ACTUAL IMAGE OF THE HIBISCUS, GURUGRAM BY SS GROUP
.....

FROM PEOPLE WHO DELIVER.
ABOVE ALL ELSE.

THE LUXURY LIVING.
THE SS GROUP WAY.

From the creators of The Hibiscus, Gurugram comes another masterpiece, The Leaf. Located in New Gurugram, in the Sector 85, this iconic address epitomizes everything which defines an address for the successful.



ACTUAL IMAGES OF THE HIBISCUS, GURUGRAM BY SS GROUP

THE PRESTIGE.
ABOVE ALL ELSE.



THE ARCHITECTS
ARCOP, MONTEREAL

THE LEAF. AT A GLANCE.



Located in Sector 85, New Gurugram

—
Spread over 11.09 acres

—
9 acre of landscaped greens with water bodies

—
Concept by renowned architect ARCOP, Montreal

—
Landscape by the acclaimed Nippayasage Montreal

—
Grand clubhouse with multiple sports facilities

—
85% green open spaces

—
Choice of apartments and duplex penthouses

—
3 side open apartments for exceptional views

—
100% power back-up

—
3 tier security system

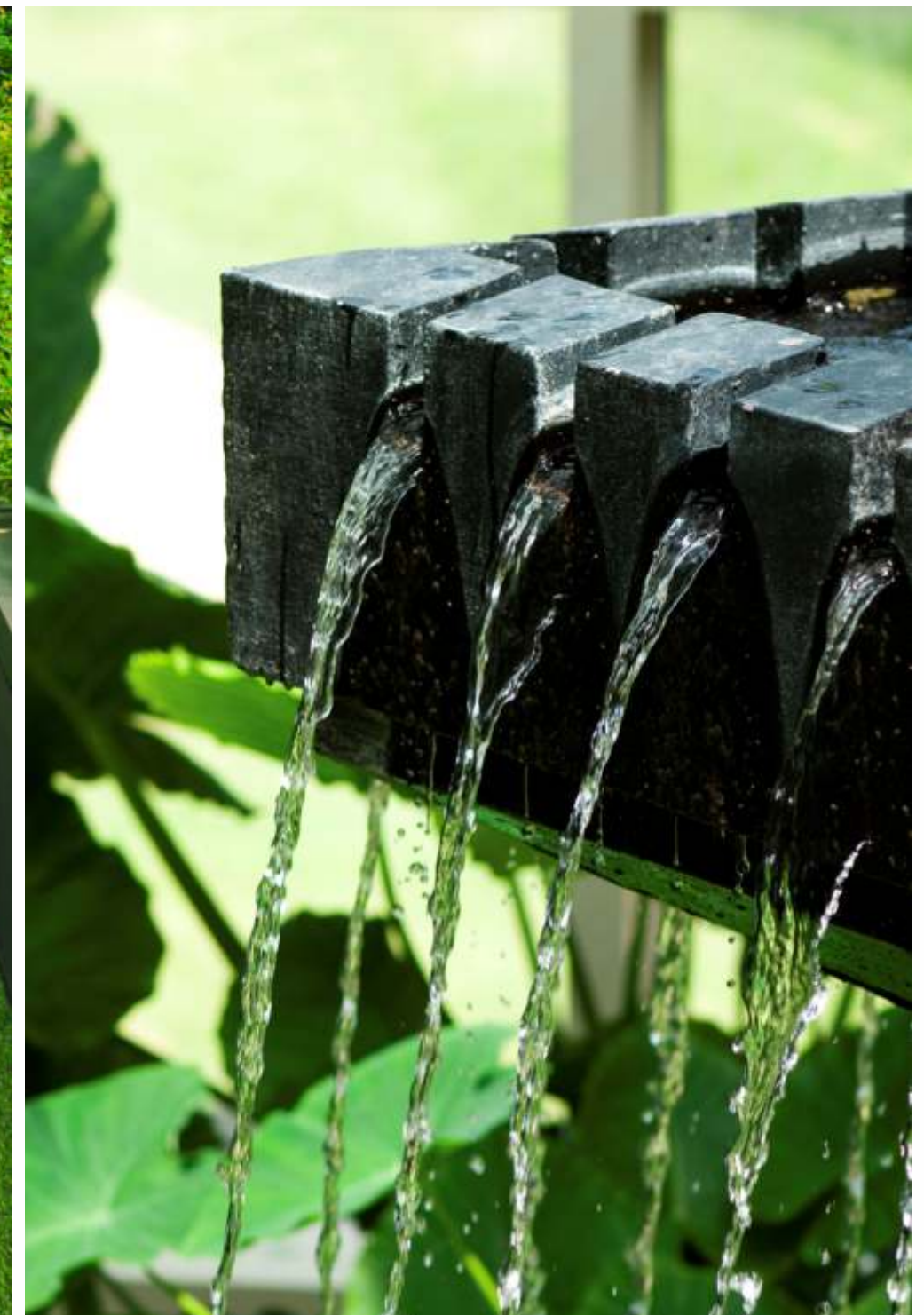


**MAKE AN ARRIVAL
STATEMENT**
ABOVE ALL ELSE

As you drive in, leaving the hustle-bustle behind, you experience an alluring blend of greens and water features that are bound to refresh you every time.

LANDSCAPE BY NIPPAYSAGE MONTREAL

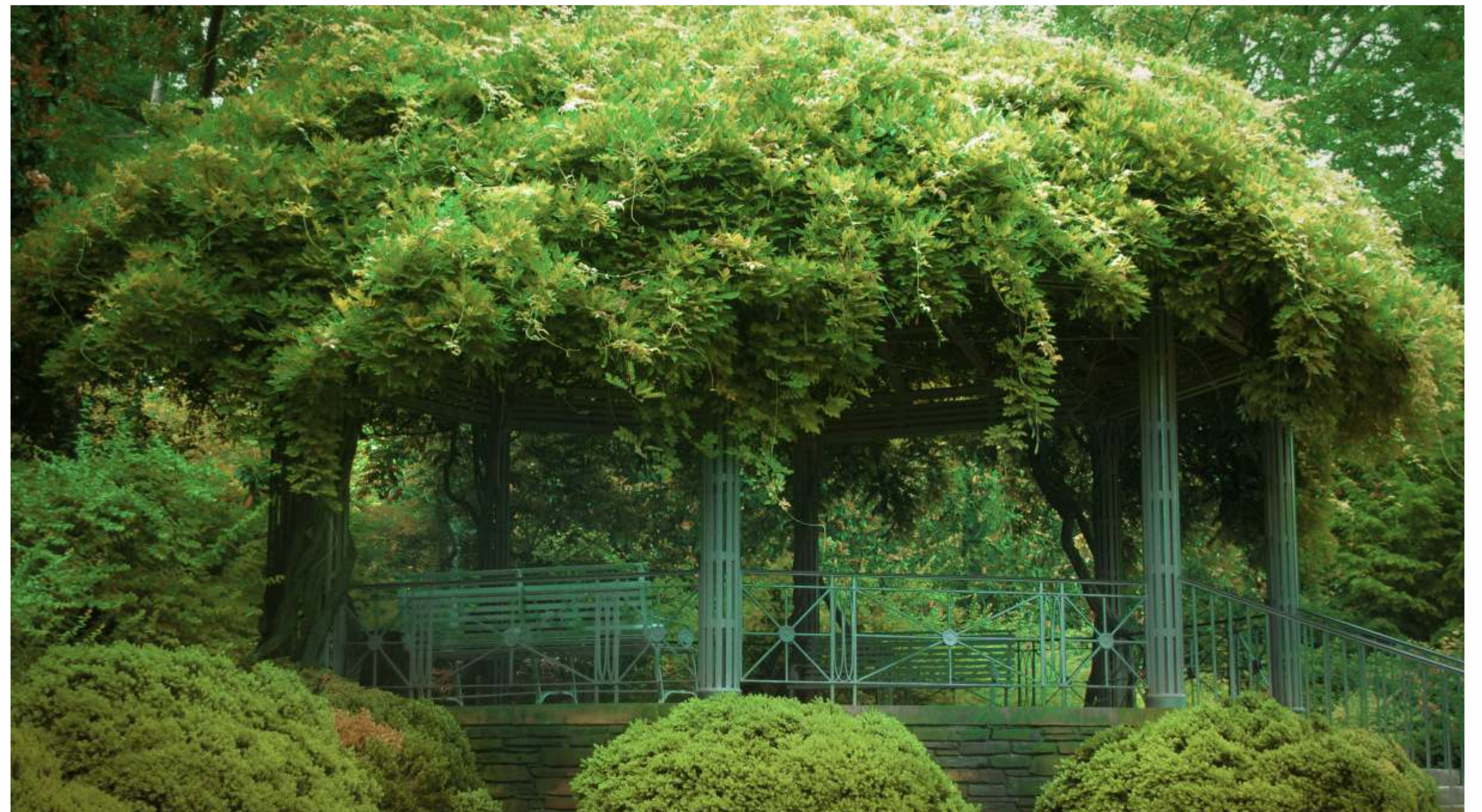
The Leaf comes equipped with jungle-inspired gardens, dedicated meditation zones, soothing water features and landscaped pathways, with the intent of bringing nature close to you and inspiring you season after season.





ENJOY THE SOUND OF SILENCE
IN JUNGLE INSPIRED GREEN BELT

One of the key privileges of living in The Leaf is to relish the company of nature. Here you will find jungle inspired dense landscaping and quiet meditation zones right amidst lush greens. The Leaf, true to its name, takes you back to nature.



TWIN LEVEL CLUB LIFE.
ABOVE ALL ELSE.





**EXCLUSIVE
PRIVELEGES**
ABOVE ALL ELSE.

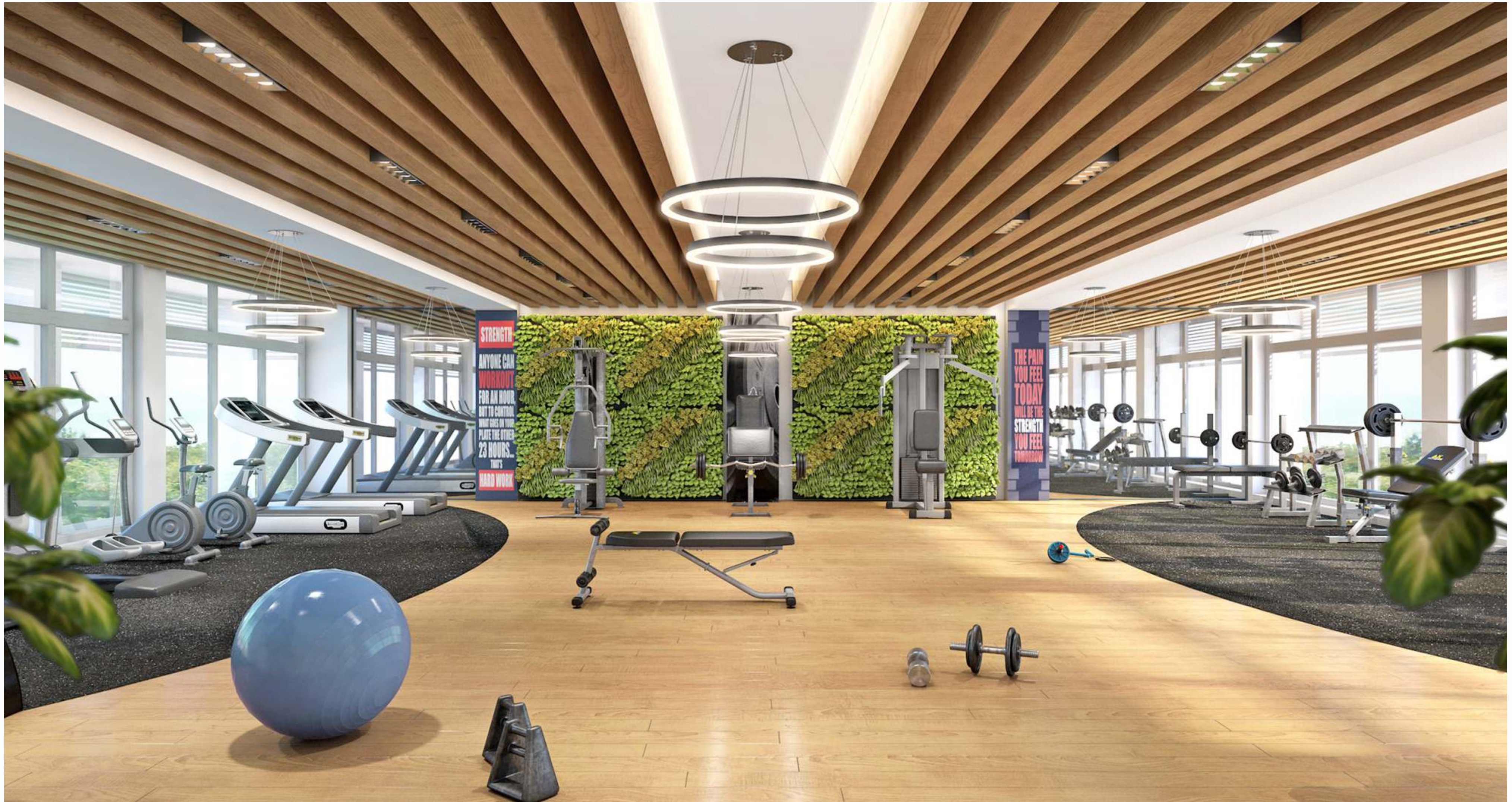
THE ART OF REJUVENATION

Spread over 15,000 sq.ft. the grand club will leave you spoilt with wide range of lifestyle amenities so that you can relax and unwind or share wonderful moments together.



RE-ENERGIZE YOUR SPIRIT WITH DAILY WORK-OUT

For a work out or a spot of pampering, there'll be a state-of-the-art gym, a studio for personal training and a massage room.



EXQUISITE HOMES.
ABOVE ALL ELSE.

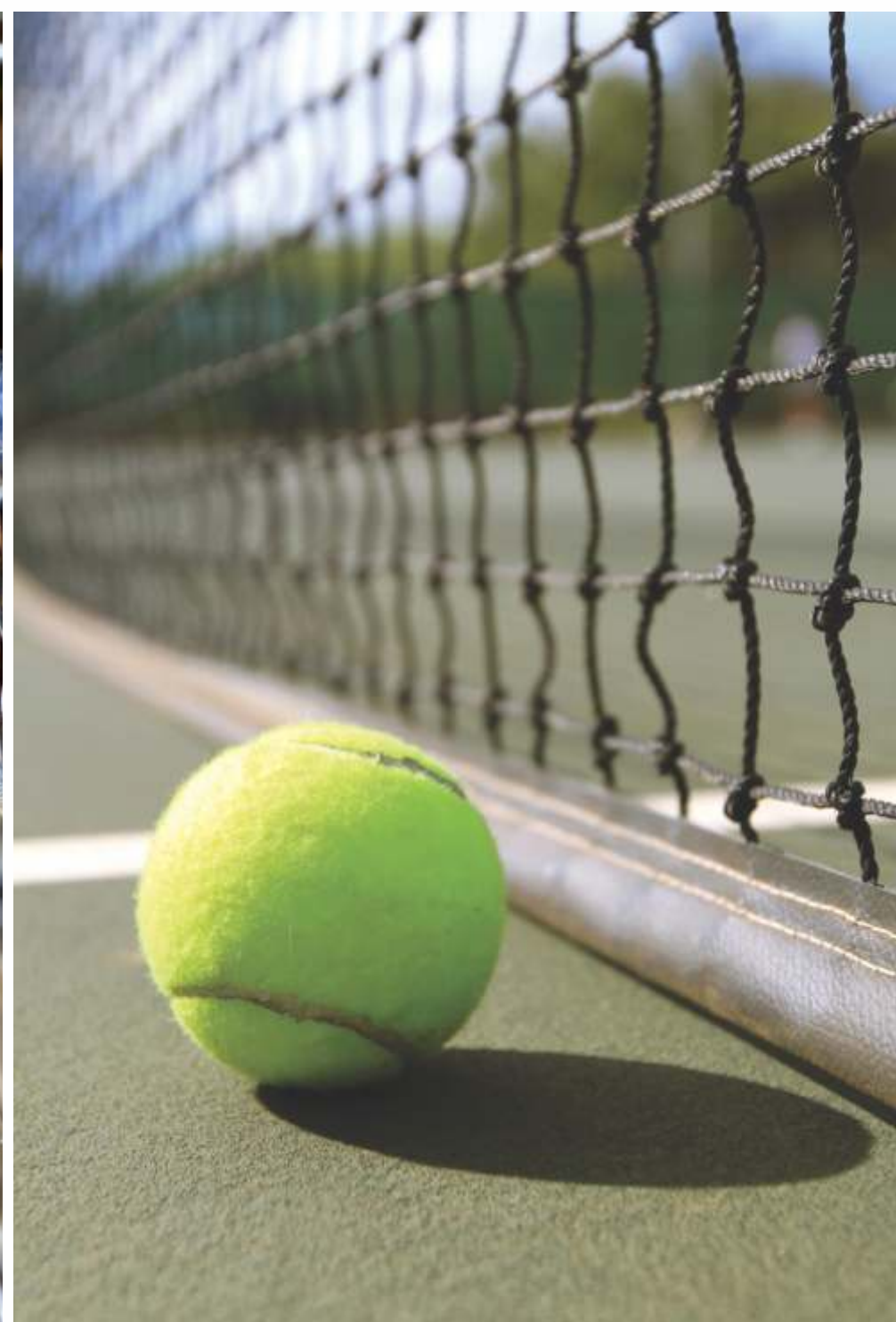
ENJOY YOUR
EXCLUSIVE WAY TO UNWIND

SPORTS AMENITIES

- Tennis Court
- 2 Badminton Courts
- Half Basketball Court
- Kids Play Area
- Yoga & Meditation
- Perennial Colourful Gardens
- Fitness Trail

LIFESTYLE AMENITIES

- Fully equipped Gymnasium
- Swimming pool
- Table Tennis
- Billiards Room
- Multipurpose hall
- Coffee bar





RAPL

THE LEAF APARTMENTS

**2 BHK - 1640 SQ.FT. (499.872 SQ.M)
TO 1772 SQ.FT (357.2256 SQ.M)**

**3 BHK - 2408 SQ.FT. (733.9584 SQ.M) &
4 BHK - 2812 SQ.FT. (857.0976 SQ.M)**

3 side open spacious and functional apartments

Designer VRV Air Conditioning

Floor to ceiling windows for a well lit vibrant home

Imported marble in the living, dining & kitchen

Optimum size balconies overlooking the designer
landscaping outdoors

Sleek finished bathrooms with premium fittings
and fixtures

THE LEAF PENTHOUSES

**4 BHK DUPLEX PENTHOUSE
3950 SQ.FT. (366.96 SQ.M)**

**5 BHK DUPLEX PENTHOUSE
4950 SQ.FT. (459.87 SQ.M)**

Twin level penthouse with 3-side open views

Spacious dining and family lounge

Italian marble flooring in living dining & kitchen area

Laminated wooden flooring in master bedroom

Spacious terrace with attached optimum size balcony

High-end fittings and fixtures

LIVING SPACES FLOW ELEGANTLY AND NATURALLY

A truly contemporary living spaces incorporates neutral palette and minimalist style that seeks to enhance residents' lifestyle. The Floor-to-ceiling glass windows optimize natural ventilation and light penetration to promote energy efficiency, while offering 360-degree views of city skyline & central court.



DINING SPACES FOR FAMILY'S STORY TIME

The dining areas are the heart of these modern penthouses, thoughtfully designed to accommodate the many different aspects of everyday life, from serve, relax and entertain with ease.



FAMILY LOUNGE FOR LIVELY CHIT-CHATS

For those looking for an extra touch of exceptional luxury, the lounge attached to your living/dining areas is the perfect place to entertain guests or simply to relax with the beautiful views from the comfort and privacy of your own home.



MASTER BEDROOM FOR MASTER COMFORTS

A luxurious and timeless master bedroom offers the remarkable comforts of the top-of-the-range finishes, home-like proportions and truly extraordinary views from an attached balcony that are an essential part of an upper-floor living.



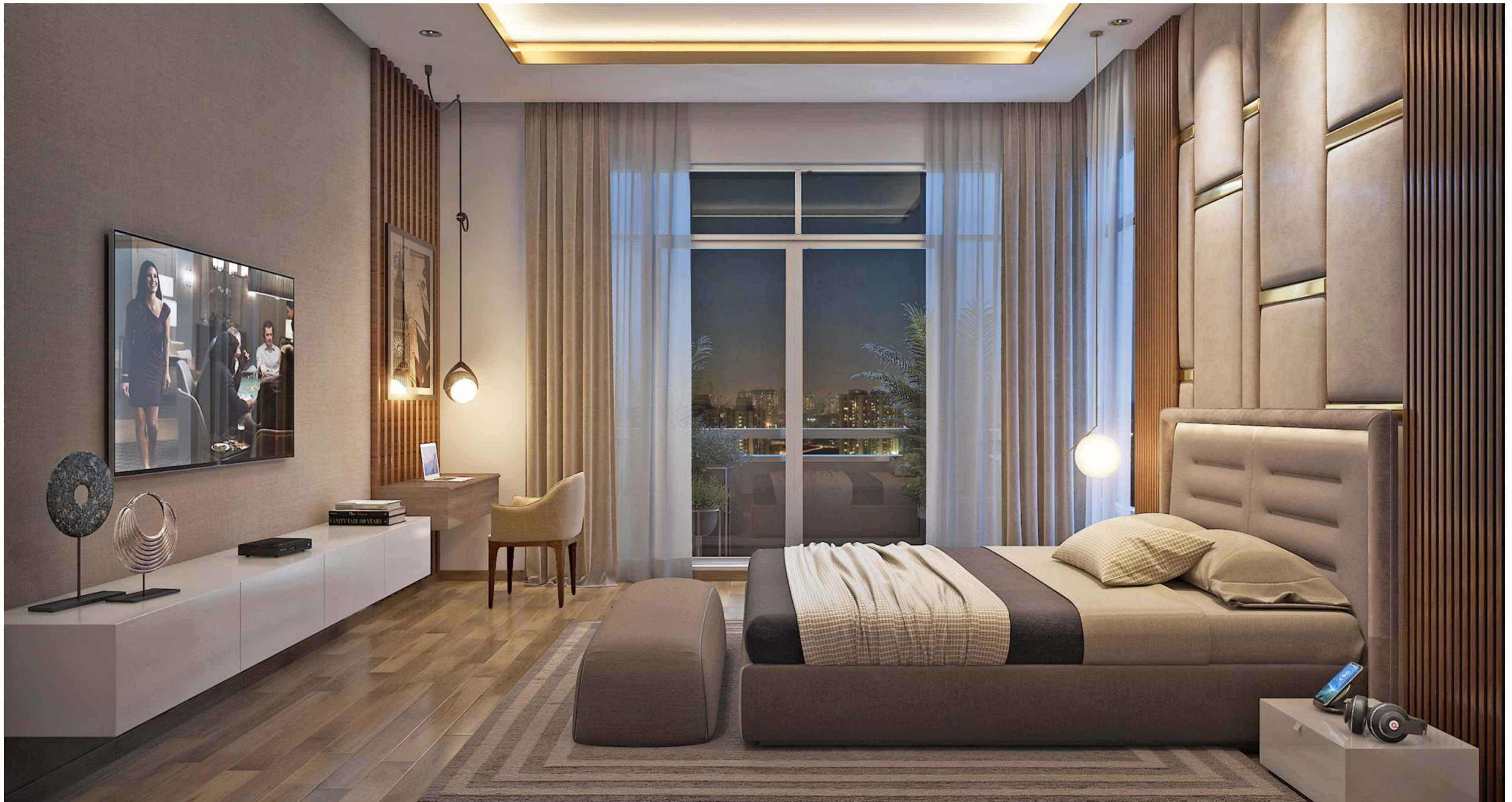
PRIVATE LOUNGE FOR SERENE MOMENTS

For those looking for an extra touch of exceptional luxury, the lounge attached to your living/dining areas is the perfect place to entertain guests or simply to relax with the beautiful views from the comfort and privacy of your own home.



SPACIOUS BEDROOMS FOR EASE OF MOVEMENT

Simple and elegant with the soft baize walls, the bedrooms at The Leaf are designed to be both a place for relaxation and a functional part of everyday life, with their distinct sleeping and dressing areas.

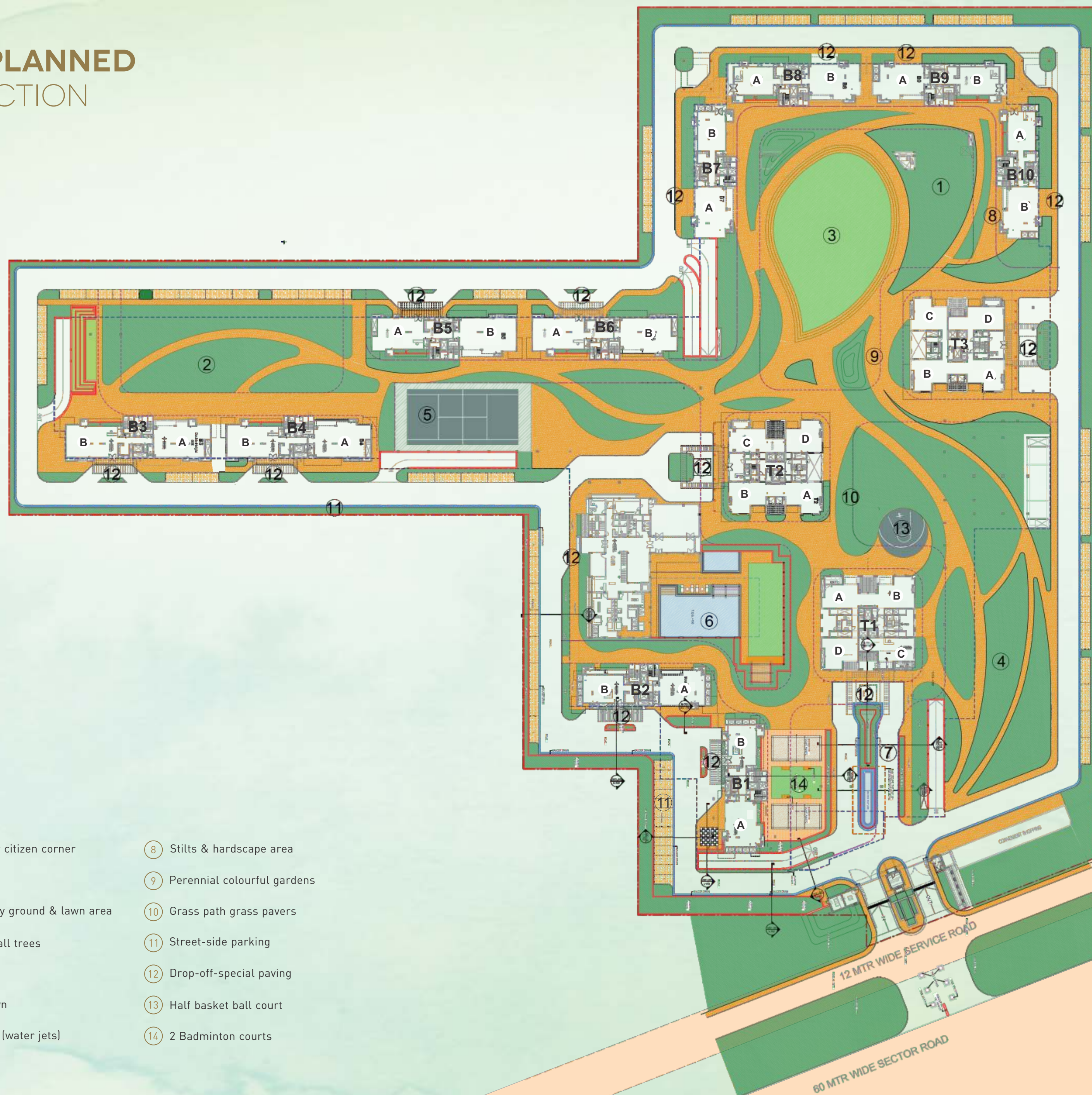


CHIC MASTER BATHROOM WITH INSPIRING FINISHES

The private shower room is designed and finished to the highest standards, with clean lines, modern fittings and carefully-sourced materials.



**MASTER PLANNED
TO PERFECTION**



- | | |
|--|-------------------------------|
| ① Kids play zone & senior citizen corner | ⑧ Stilts & hardscape area |
| ② Putting green area | ⑨ Perennial colourful gardens |
| ③ Sunken mini soccer play ground & lawn area | ⑩ Grass path grass pavers |
| ④ Wetland and forest of tall trees | ⑪ Street-side parking |
| ⑤ Tennis court | ⑫ Drop-off-special paving |
| ⑥ Club pool and party lawn | ⑬ Half basket ball court |
| ⑦ Entrance water feature (water jets) | ⑭ 2 Badminton courts |

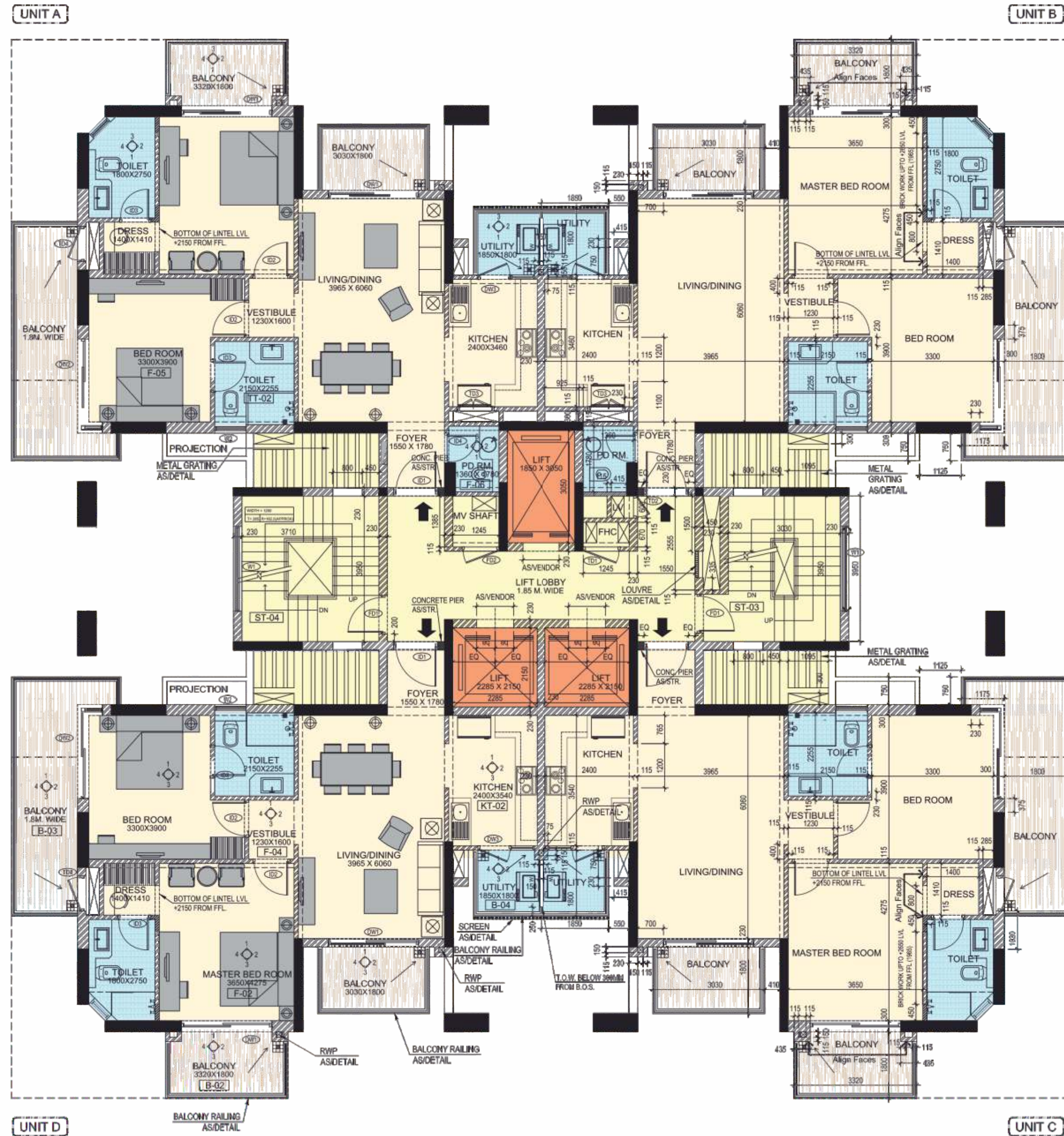


FLOOR PLAN

2 BHK - APARTMENTS

TYPICAL FLOOR

SIZE - 1640 SQ.FT. to 1772 SQ.FT.



- Formal Living
- Dining/Kitchen
- 2 Bedrooms
- 2 Balcony
- Utility Area
- 2 Toilets
- Powder Room

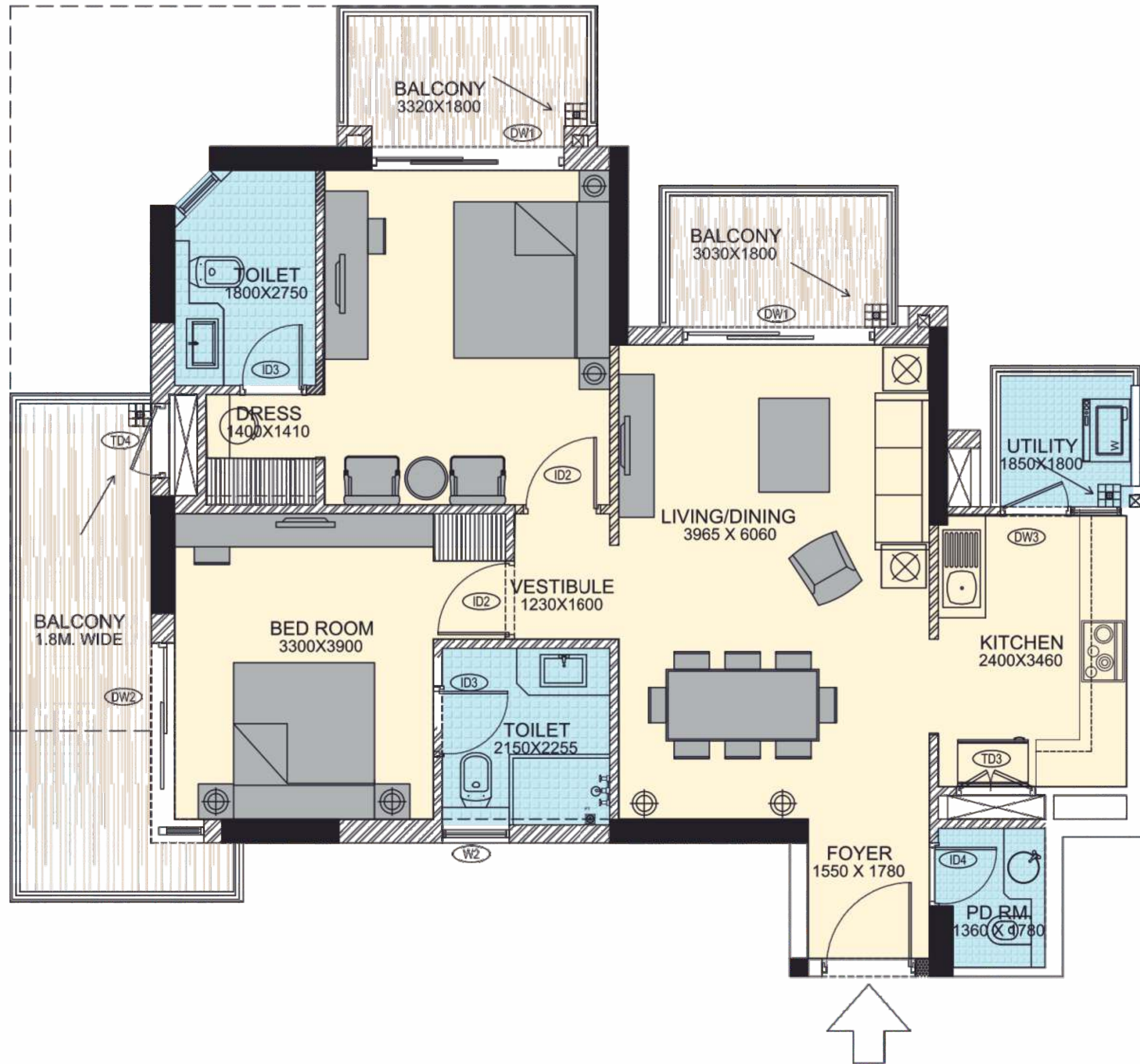


FLOOR PLAN

2 BHK - APARTMENTS

TYPE -A

SIZE - 1671



- Formal Living
- Dining/Kitchen
- 2 Bedrooms
- 2 Balcony
- Utility Area
- 2 Toilets
- Powder Room

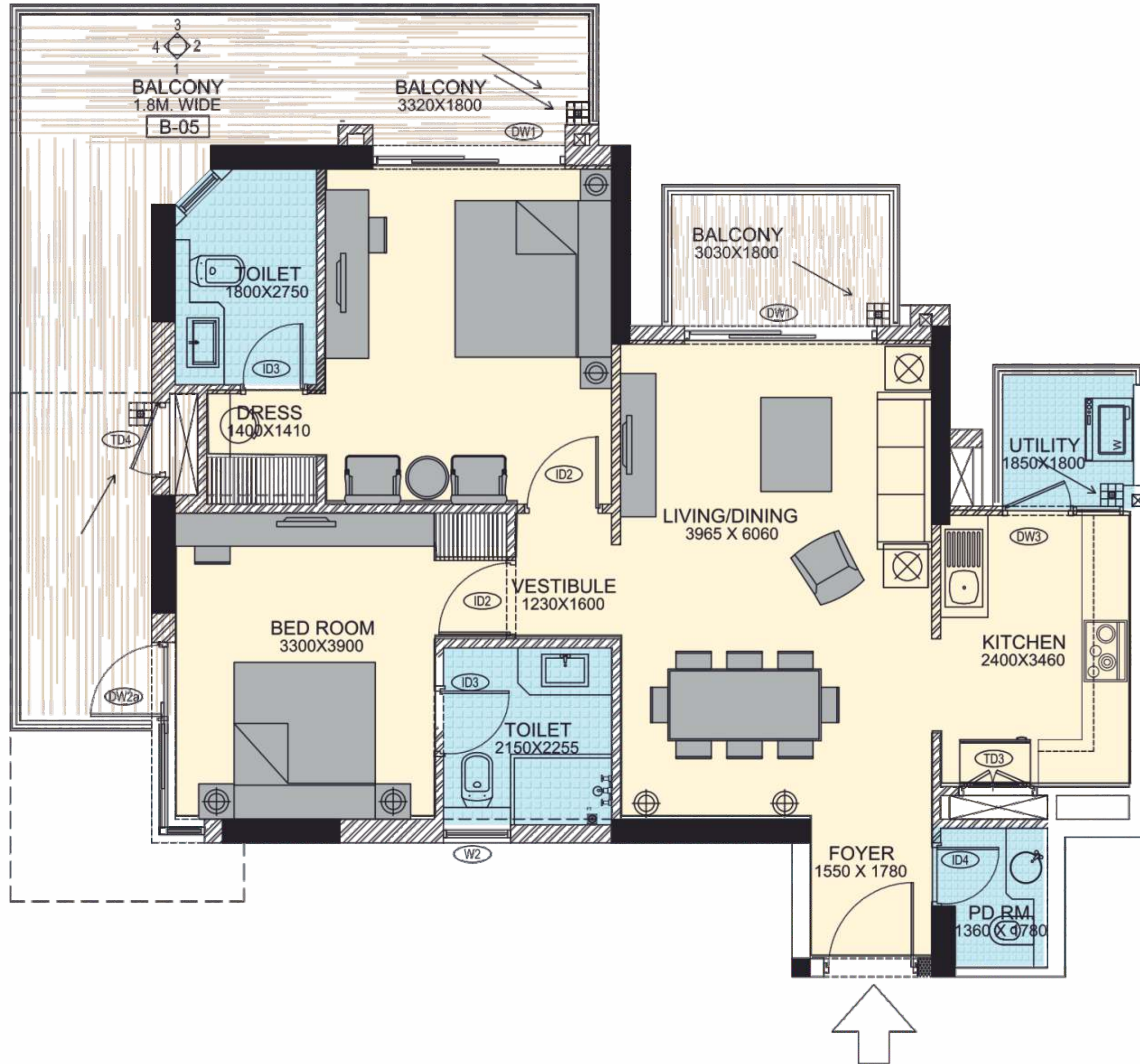


FLOOR PLAN

2 BHK - APARTMENTS

TYPE - B

SIZE - 1772



- Formal Living
- Dining/Kitchen
- 2 Bedrooms
- 2 Balcony
- Utility Area
- 2 Toilets
- Powder Room



FLOOR PLAN

2 BHK - APARTMENTS

TYPE -C

SIZE - 1741



- Formal Living
- Dining/Kitchen
- 2 Bedrooms
- 2 Balcony
- Utility Area
- 2 Toilets
- Powder Room

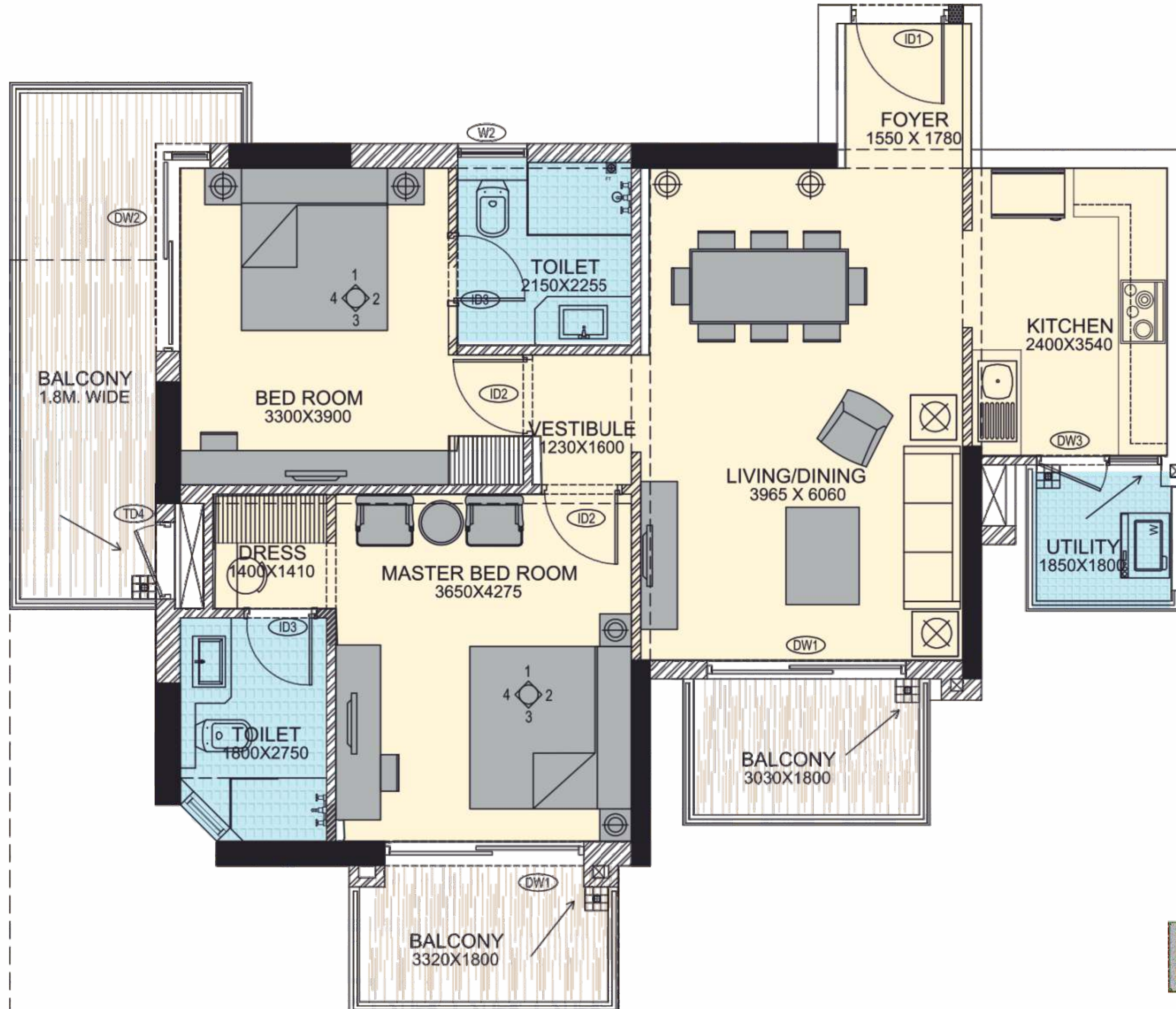
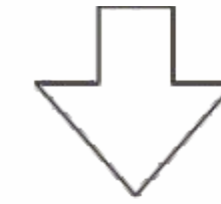


FLOOR PLAN

2 BHK - APARTMENTS

TYPE -D

SIZE - 1640



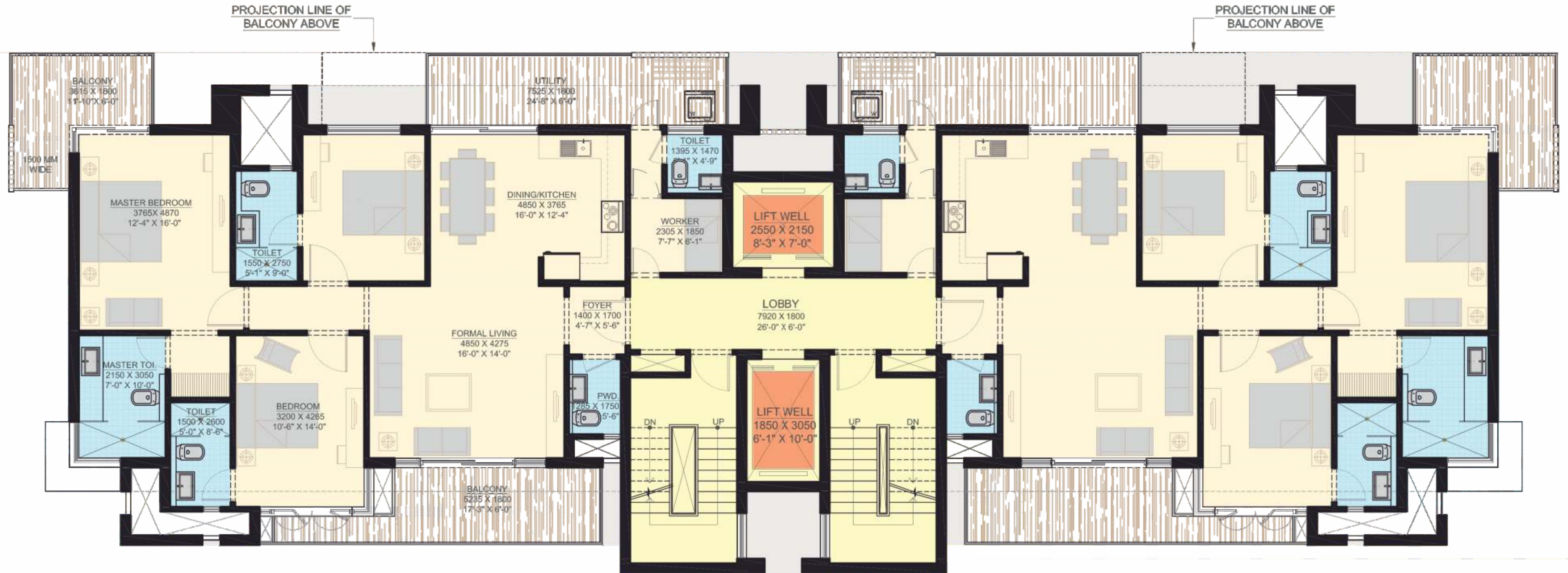
- Formal Living
- Dining/Kitchen
- 2 Bedrooms
- 2 Balcony
- Utility Area
- 2 Toilets
- Powder Room



FLOOR PLAN

3 BHK - APARTMENTS

SIZE-2408 SQ.FT. (223.61 SQ.M.)



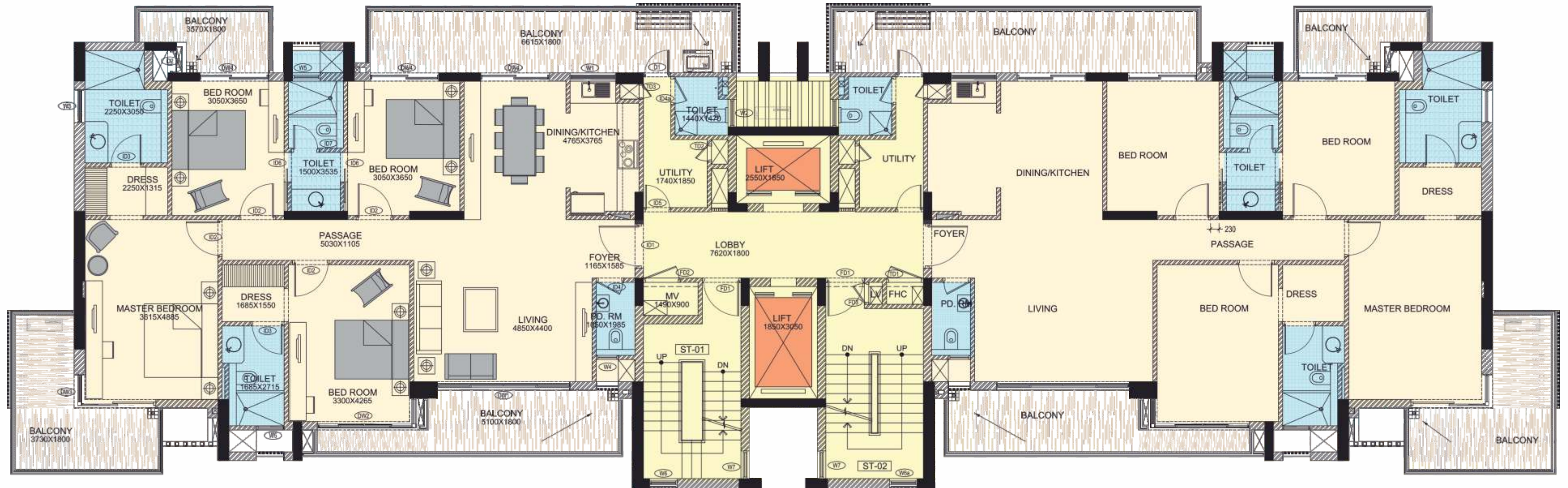
- Formal Living
- Dining/Kitchen
- Dressing Area
- Master Bedroom
- 3 Bedrooms
- 3 Balcony
- Utility Area
- 3 Toilets
- Powder Room



FLOOR PLAN

4 BHK - APARTMENTS

SIZE-2812 SQ.FT. (261.24 SQ.M.)



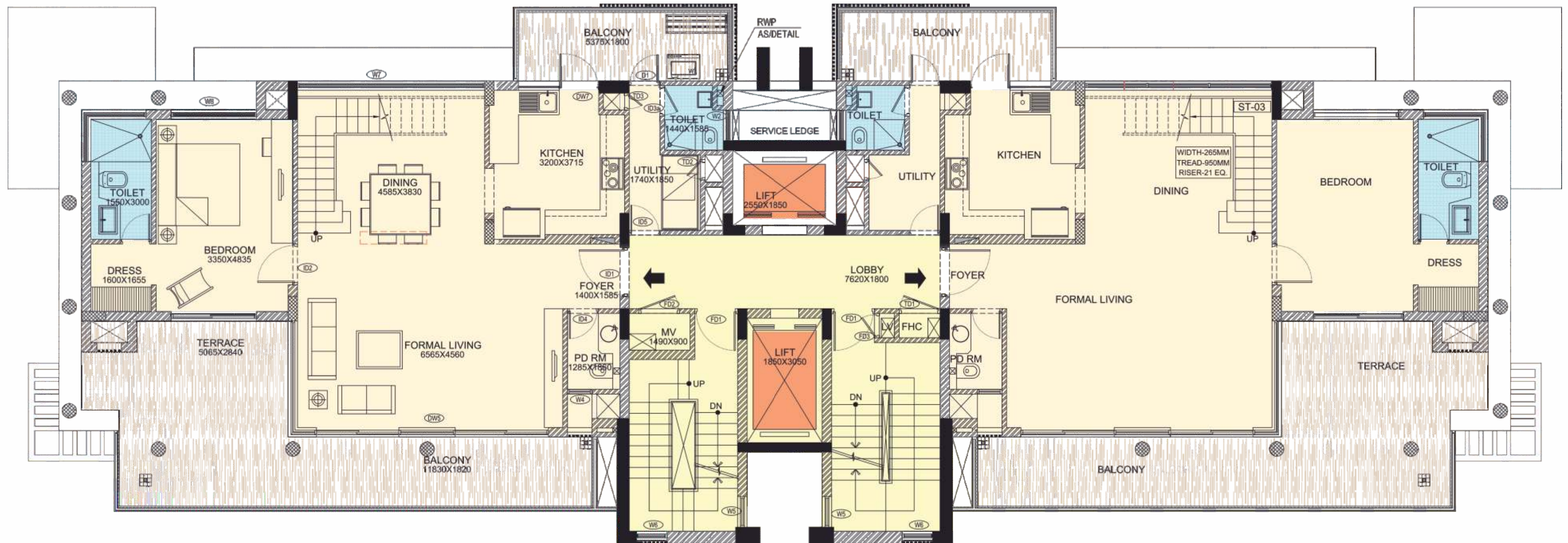
- Formal Living
- Dining/Kitchen
- Dressing Area
- Master Bedroom
- 4 Bedrooms
- 4 Balcony
- Utility Area
- 3 Toilets
- Powder Room



FLOOR PLAN

4 BHK - DUPLEX LOWER LVL

SIZE-3950 SQ.FT. (366.967 SQ.M.)



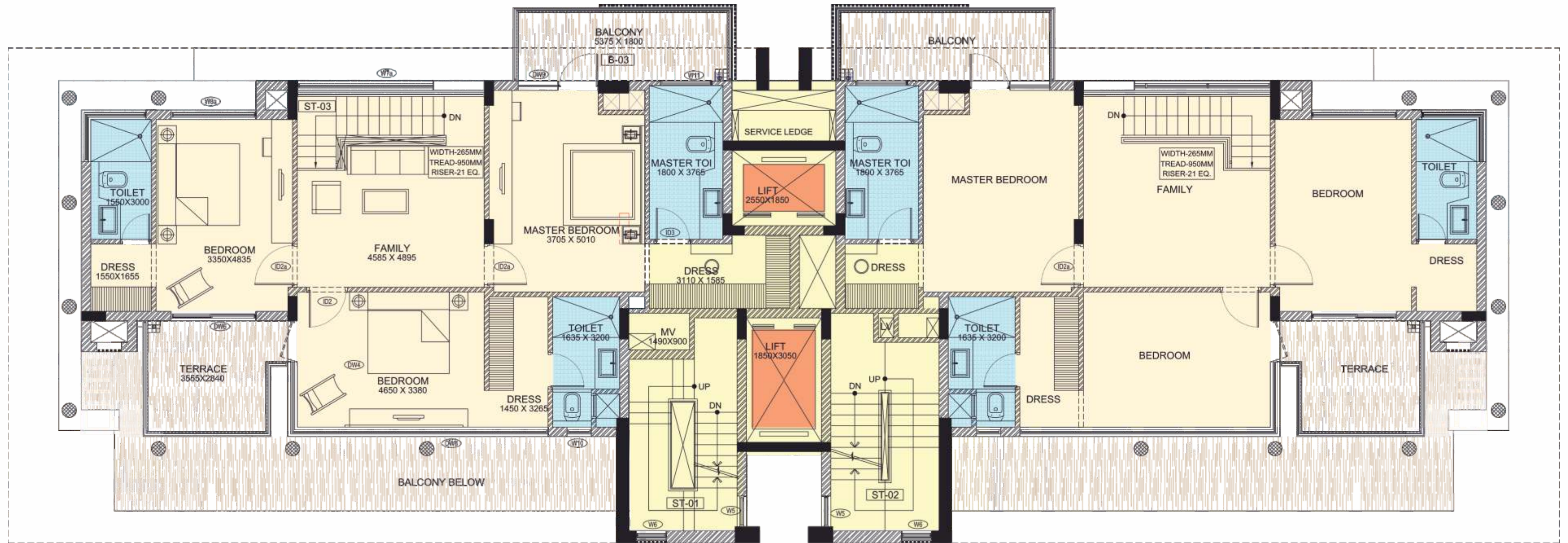
- Formal Living
- Dining/Kitchen
- Dressing Area
- Bedrooms
- 2 Balcony
- Utility Area
- 1 Toilets
- Terrace
- Powder Room



FLOOR PLAN

4 BHK - DUPLEX UPPER LVL

SIZE-3950 SQ.FT. (366.967 SQ.M.)



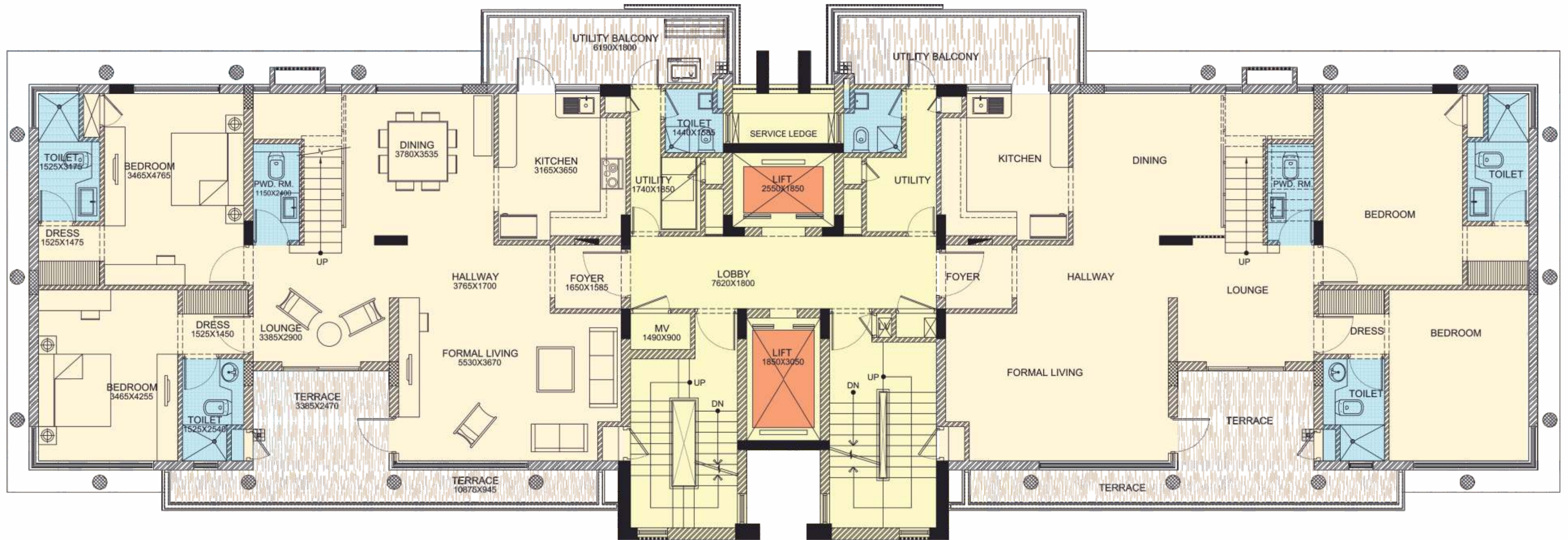
- Formal Living
- Dining/Kitchen
- Dressing Area
- Master Bedroom
- 2 Bedrooms
- 1 Master Toilets
- 2 Toilets
- 2 Balcony
- Powder Room



FLOOR PLAN

5 BHK - DUPLEX LOWER LVL

SIZE-4950 SQ.FT. (459.87 SQ.M.)



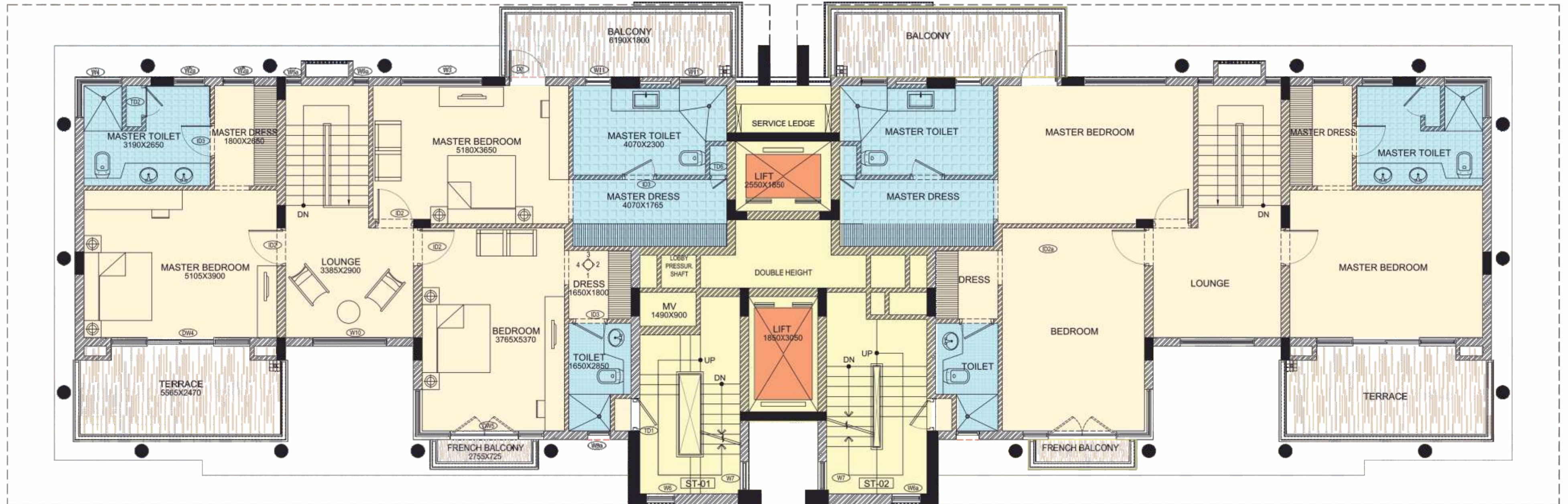
- Formal Living
- Dining/Kitchen
- Dressing Area
- Lounge Area
- 2 Bedrooms
- Utility Balcony
- 2 Toilets
- Terrace
- Powder Room



FLOOR PLAN

5 BHK - DUPLEX UPPER LVL

SIZE-4950 SQ.FT. (459.87 SQ.M.)



- 2 Master Dressing Room
- 1 Dressing Room
- Lounge Area
- 2 Master Toilet
- 2 Master Bedroom
- 1 Bedroom
- Balcony
- Terrace





SPECIFICATIONS

Window / Glazing Window - 6/8mm thick plain glass

DOORS

Main Door Solid wood paneled door with polish finish
 Internals Door Painted Flush Doors
 Air Conditioning VRV Air-Conditioning in Living room/dinning room/ lounge / bedroom
 Electrical Fittings Modular switches & MCB

LIVING/DINING/FOYER/FAMILY LOUNGE

Floor Italian Marble
 Walls POP Punning with acrylic emulsion paint
 Ceiling POP Punning with acrylic emulsion paint

MASTER BEDROOM/DRESS ROOM

Floor Laminated Wooden
 Walls POP Punning with acrylic emulsion paint
 Ceiling POP Punning with acrylic emulsion paint

MASTER TOILET

Floor Anti-Skid vitrified tiles
 Walls Ceramic Tiles
 Ceiling POP punning with acrylic emulsion paint
 Counter Stone counter
 Sanitary ware / CP Fittings Good Quality, Roca / Kohler / Parryware

BEDROOM

Floor Branded Anti-Skid Vetrified Tiles
 Walls POP punning with acrylic emulsion paint
 Ceiling POP punning with acrylic emulsion paint

TOILET

Floor Anti-Skid Vitrified tiles
 Walls Ceramic Tiles
 Ceiling POP punning with acrylic emulsion paint
 Counter Stone counter
 Sanitary ware / CP Fittings Good Quality, Roca / Kohler / Parryware

KITCHEN

Floor Italian Marble
 Walls Combination of Tiles and POP punning with acrylic emulsion
 Ceiling POP punning with acrylic emulsion paint

UTILITY ROOM/UTILITY BALCONY/TOILET

Floor Tiles
 Walls & Ceiling OBD
 Toilet ISI Quality Tiles, Chinaware and CP fittings
 Balcony ISI Quality Tiles with 1.0 high MS railing

SIT-OUTS

Floor Anti-skid Tiles
 Walls & Ceiling Weather proof paint
 Raitings M.S. Railing

THE FUTURE IS NEW GURUGRAM



3 MINS FROM **DWARKA EXPRESSWAY**

5 MINS FROM **NH-08**

10 MINS FROM **RAJIV CHOWK**

25 MINS FROM **IGI AIRPORT**

IN THE VICINITY

SCHOOLS

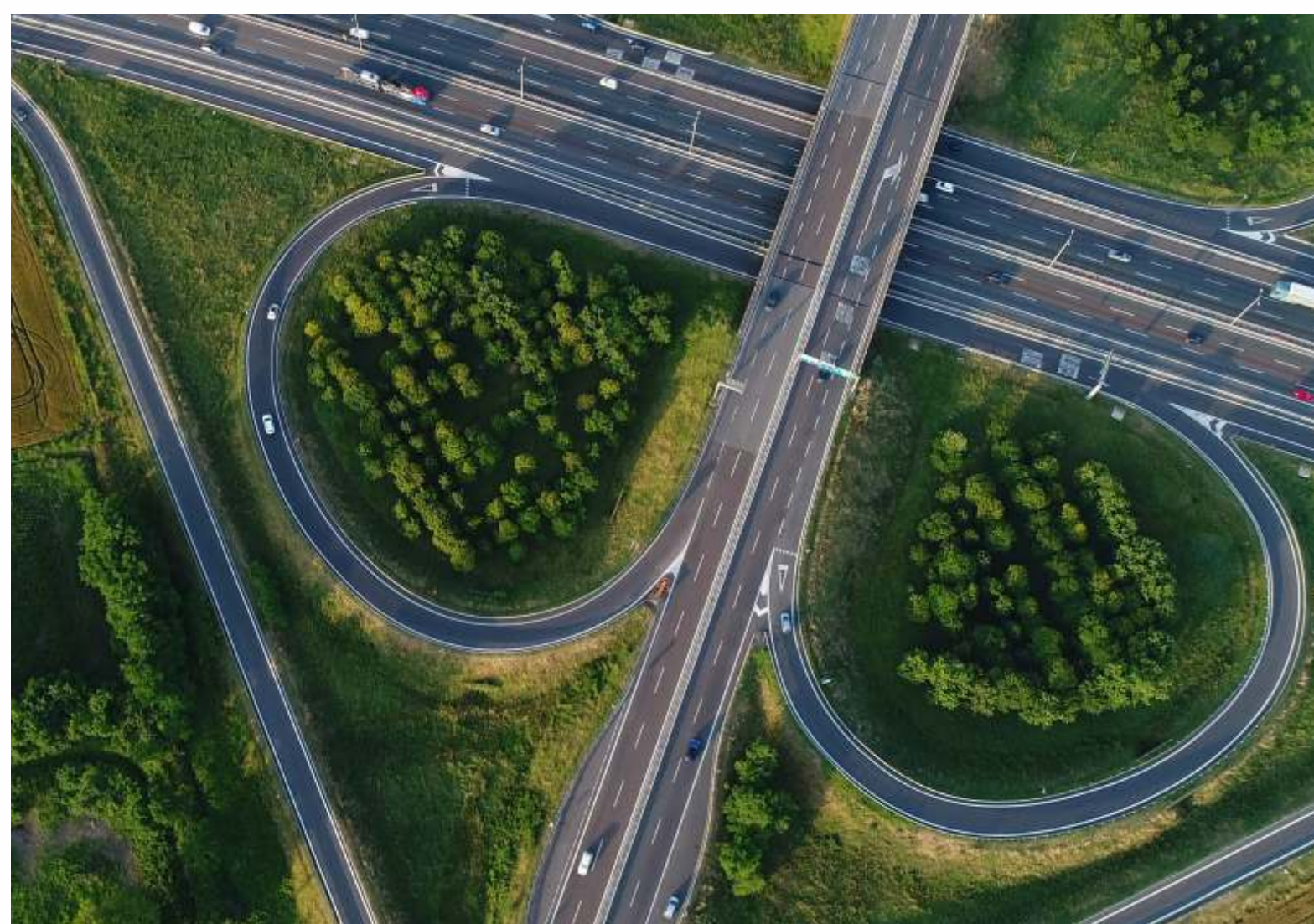
Bharat Ram Global School
St. Xavier's High School
Yaduvansi Shiksha Niketan
Euro International School
Matrikiran High School
Delhi Public School
Saraswati Public School
Broadways Intern. School
Lions Public School

HOSPITALS

Shri Balaji Hospital
Shri Shivam Hospital
VPS Hospital Rockland
Sunrise Hospital
ESIC Hospital
Medanta The Medicity
Fortis Hospital

HOTELS

Hyatt Regency
Misaki Manesar
Savoy Suites
Ginger Manesar
Hilton Garden Inn
Treehouse Queens Pearl
Park Inn





THE HIBISCUS, SECTOR-50, GURUGRAM



SS PLAZA, SECTOR 47, GURUGRAM



THE CORALWOOD, SECTOR 84, GURUGRAM

SS GROUP: Built on *values.*

Delivered over
20 LANDMARK
Residential & Commercial projects

Over
17 MILLION SQ.FT.
Under construction

Armed with
HUGE LAND BANK
in Delhi and NCR

ARCHITECTS BY
ACCLAIMED ARCOP
MONTEREAL

27 MILLION SQ.FT. OF
UPCOMING RESIDENTIAL
& COMMERCIAL PROJECTS

SS Group is a well-known, trusted and one of the oldest business conglomerate with strong presence in real estate development. Established in the year 1992, the Group has experience of over two decades in development & delivery of unique, innovative, high quality and user friendly real estate products in the NCR region.

With largest land banks in NCR region, Some of the notable delivered projects include The Hibiscus, SS Plaza, Southend, Aaron Ville, The Lilac to name a few.

The Group is committed towards developing state-of-the-art real estate masterpieces. As a step up the ladder of success, the Group is diversifying into Brewery, Healthcare, Hospitality and Education.



CORPORATE OFFICE

77, SS House, Sector-44,
Gurugram, Haryana-122003

CALL +91-124-4335100

EMAIL sales@ssgroup-india.com

VISIT ssgroup-india.com